

26 Port Full Gigabit PoE Switch



www.hruiotech.com



26 Port Gigabit Ethernet PoE Switch, adopting high-quality and high-speed network IC, this switch thoroughly solves the problem of high noise when deploying small switches in office environments through a fan free silent design. This switch has 24* Gigabit PoE network ports and 2* Gigabit SFP ports, providing seamless connection for 10/100/1000M Ethernet for easy management and maintenance. The PoE power supply port can automatically detect and supply power to powered devices that comply with the IEEE802.3af/at standard. Non-PoE devices will not be powered by intelligent detection and only transmit data. It can be widely used in security network video surveillance, hotels, campus, small and medium-sized enterprise network engineering and other occasions.

Main Features

- Support 24* 10/100/1000M PoE Ports+ +2* Gigabit SFP Ports.
- Support IEEE802.3, IEEE802.3u, IEEE802.3x, IEEE802.3ab, IEEE802.3z.
- Ethernet Ports support 10/100/1000M self- adaptive.
- Support automatic port flipping (Auto MDI/MDIX).
- Adopting storage and forwarding exchange mechanism.
- All ports support line speed switching.
- 1U rack installation.
- Panel indicator monitoring status and help failure analysis.
- Equipped with a three speed one button intelligent dial switch, supporting VLAN, Default and Extend modes.
- Support port surge protection: Common Mode 4KV, Differential Mode 2KV (Class B), ESD: Air 8KV, Contact 6KV (Class C).

Application Environment

Security Monitoring Network:

This product is widely used in the field of network monitoring and can provide data connection and power supply for network cameras, allowing them to be installed in any location without considering power supply connection.

WLAN Wireless Network:

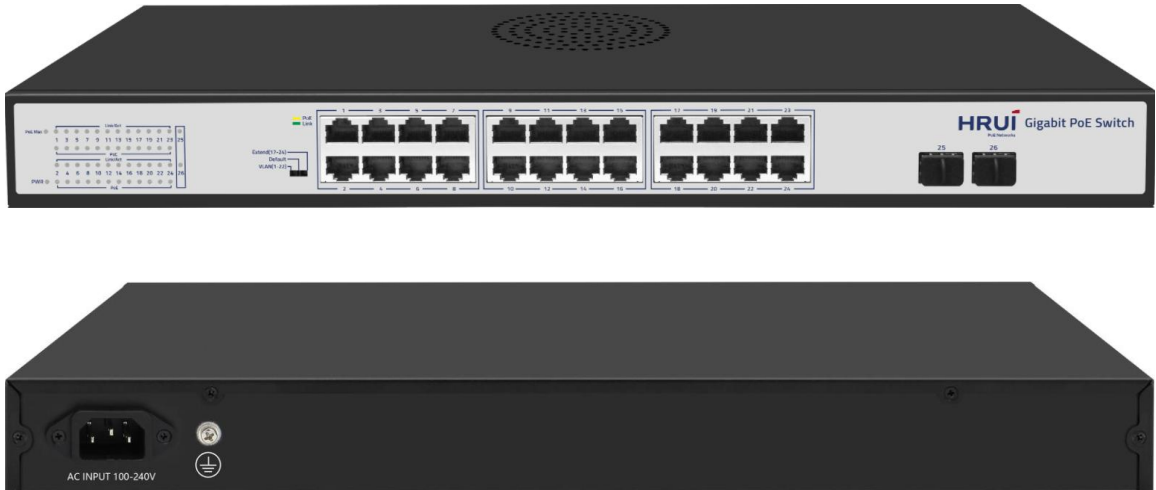
This product is widely used in park WLAN wireless networking projects. PoE switches can provide power and data transmission for wireless APs (wireless access points), and only one network cable needs to be deployed to meet power and data transmission needs, greatly saving wiring costs.

Specification	
I/O Interface	
Power	AC INPUT (100-240V) 50/60Hz
Ethernet	24* 10/100/1000M PoE Ports 2* Gigabit SFP Ports
Performance	
Bandwidth	52Gbps
Packet Forward Rate	38.68Mpps
Package Cache	4Mbit
MAC Address	8K
Forwarding Mode	Store and forward
Standard	
Network Protocol	IEEE 802.3: Ethernet Media Access Control (MAC) Protocol IEEE 802.3i: 10BASE-T Ethernet IEEE 802.3u: 100BASE-TX Fast Ethernet IEEE 802.3ab: 1000BASE-T Gigabit Ethernet IEEE 802.3z: 1000BASE-X Gigabit Ethernet (Fiber Optic) IEEE 802.3x: Flow Control
Industry Standard	EMS: EN61000-4-2 (ESD) EN61000-4-5 (Surge)
Network medium	10Base-T: Cat 3, 4, 5 Class or above UTP/STP ($\leq 100m$) 100Base-TX: Cat 5 Class or above UTP/STP ($\leq 100m$) 1000Base-TX: Cat 5 Class or above UTP/STP ($\leq 100m$)
Optical Medium	Multimode optical fiber: 50/125, 62.5/125, 100/140um Single-mode optical fiber: 8/125, 8.7/125, 9/125, 10/125um
Environment Standard	
Working Environment	Working temperature: -10~50°C Storage temperature: -40~70°C Working humidity: 10%~90%, non-condensing Storage humidity: 5%~95%, non-condensing

Physical Specification	
Structure Size	Product Dimensions: 440*280*44mm Package Dimensions: 500*365*85mm Product N.W: 3.55KG Product G.W: 4.22KG
Packing Info	Carton Dimensions: 520*445*310mm Packing Quantity: 5 PCS Packing Weight: 22.1KG
Power Voltage	Input Voltage: AC 100-240V 50/60Hz Supply Power: 52V 7.69A 400W
Power Consumption	Product power: 18W POE power: 380W
Package List	Switch 1 pc; Power cord 1 pc; User manual 1 pc; Certification 1 pc; Rack ear 1 pair
Indicator	
PWR	On: Powered on Off: Powered off
1-27 Green	On: Link normal Flashing: Data transmitting Off: Link blocked
1-24 Yellow (PoE)	On: POE Powered on Off: POE powered off
POE Max(Green)	Off: Indicates PoE power usage is less than 90% Flashing: Indicates PoE power usage of $90\% \leq P \leq 95\%$ On: Indicates the PoE power usage is at $95\% < P < 100\%$
VLAN	Port isolation, ports 1-22 achieve isolation of monitoring, can only communicate with the ports 23-26, to protect internal network security.
Default	Normal mode, all ports can communicate with each other, transmission distance is within 100m, transmission rate is 10/100/1000M self-adaptive.
Extend	Link extend mode, PoE power supply and data transmission distance of ports 17-24 can be extended to 250m, but the transmission rate will down to 10M.

Order Info	
HR900-AFG-242S-400	26 Port Full Gigabit PoE Switch

Product Picture



Product Structure

