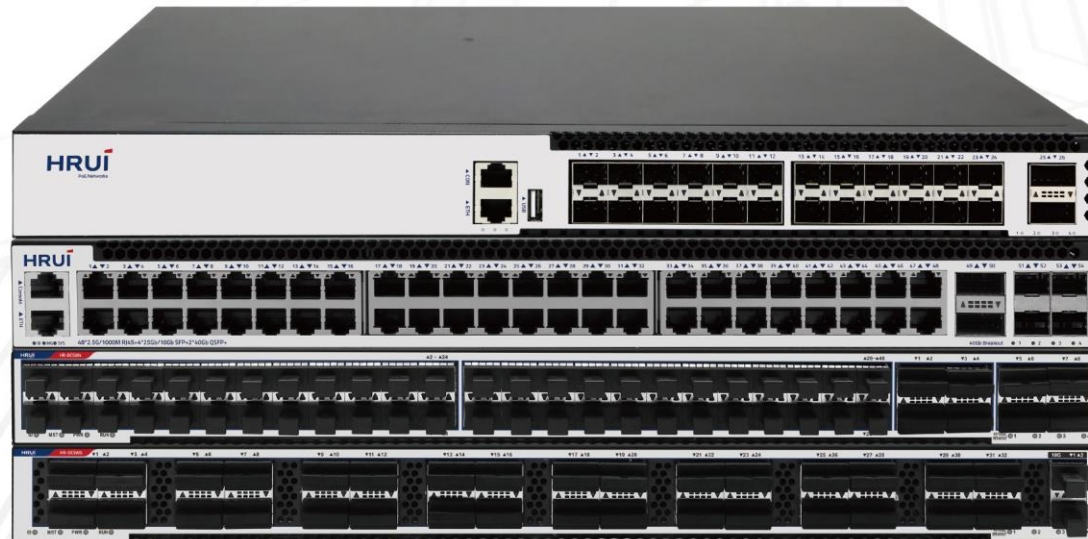
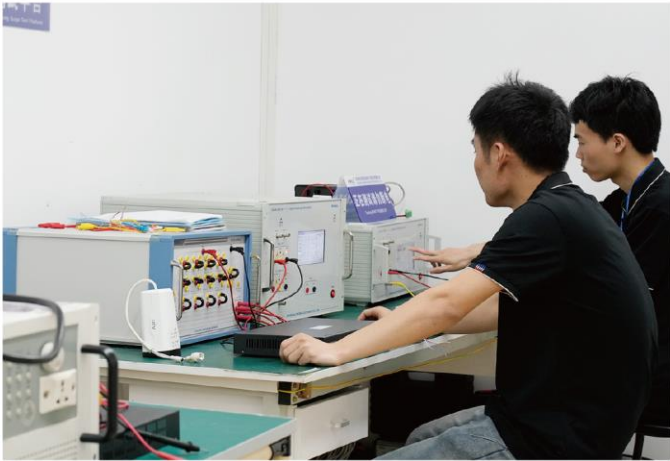


Data Center Switch





R&D Advantage

We have a large technical service team composed of 40 engineers, can provide OEM/ODM product customization, software function customization and other technical support. We are able to provide remote technical operation support within 24 hours, after-sales technical support such as real-time technical issues, video conferences, etc.



>60

SKUs developed per year



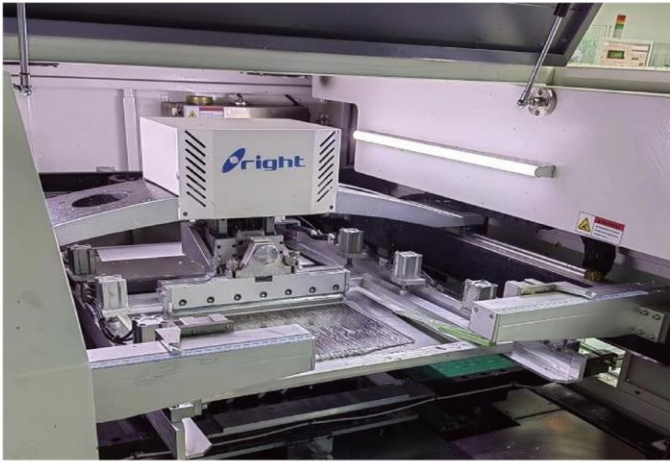
>40

R&D personnel



>10 years

Development experience



Factory View

HRUI has achieved significant manufacturing environment advantage and a complete industrial layout after years of hard work and precipitation.



2013

Company established



≥300

Employees



12000m²

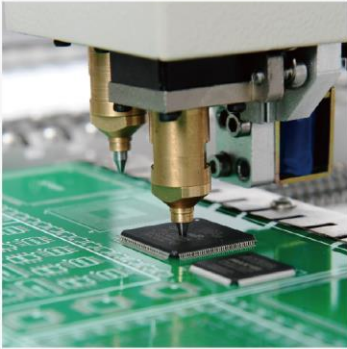
Industrial Plant



≥250K pcs

Production per Month

Why choose HRUI ?



Product quality and reliability

With Advanced Manufacturing Processes and quality testing all in Shenzhen, HRUI is being the approved vendor supplying switches to many OEM/ODM/JDM brand customers around the world.



Factory Capability and Capacity

ISO9001/14001/45001 Manufacturing Lines; Capacity of over 2 Million pcs of switches per year. Qualified by lots of world famous brand customers, and audited by CE/Anatel/UL.



Networking Product Development

>40 R&D personnel, >60 Switch SKUs developed per year, >10 years of experiences in developing networking switches and firmwares.



Can Pass Regulatory Certificates

Capable of getting major regulatory certificates (CE, FCC,UL, CB, KC, ANATEL, etc.)

Data Center Switch

				
Model	HR-SWTG3F24C2S	HR-SWTG3DE48A6S	HR-DCSW4	HR-DCSW5
Port Rate	24*10G SFP+ 2*100GE QSFP28	48*2.5GE + 4*10/25G SFP28 + 2*40G QSFP+	48*25G SFP28 + 8*100G QSFP28	32*100G QSFP28
Power Input	AC100-240V	AC100-240V	AC100-240V	AC100-240V
Bandwidth	880Gbps	600Gbps	4.0T	6.4T
L3 Function	Layer 3 network management function, dynamic/static link aggregation, IPv4/IPv6 dual-stack, OSPF, ECMP/VRRP/VARP/Smart Link/BFD/ERPS, VXLAN and EVPN technologies and other network functions			
Surge Protection	6KV	6KV	6KV	6KV
ESD	8KV	8KV	8KV	8KV
Working Temperature	0~40°C	0~40°C	0~40°C	0~40°C
Product Size(mm)	440*360*44mm	442*290*43.6mm	440*420*44mm	440*420*44mm