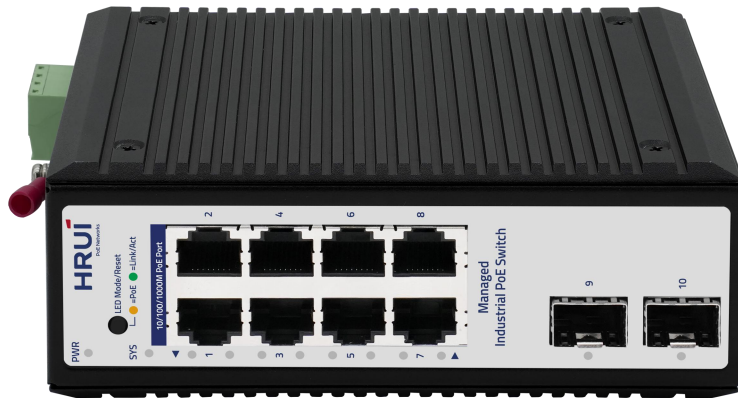


10-Port Gigabit Industrial Managed PoE Switch



Product Highlights

- 8*1Gbps PoE ports+2*1Gbps SFP ports+1*Console port
- Support IEEE802.3, IEEE802.3u, IEEE802.3x, IEEE802.3z / ab, IEEE802.1Q, IEEE802.1p, IEEE802.1d/w
- Support HRUI Cloud Managed
- Support PoE power management and PoE Watchdog based on data flow detection
- Support IEEE802.3af (15.4W) and IEEE802.3at (30W)
- Support SNMP v1/v2/v3 Simple Network Management Protocol
- Support IGMP Snooping, static multicast filtering, and MLD Snooping filtering
- Support 802.1x port authentication and AAA authentication to enhance network security
- Support web, Telnet, CLI, SSH management
- IP40 protection level, high-strength aluminum shell, DIN35 rail installation
- Industrial grade 4-level design, operating temperature from -40~75°C
- Support redundant power supply connection and anti reverse connection

Hardware Features

Description	Specification
Model	HR722P-8T2GS-A
Interface	8*1Gbps PoE ports 2*1Gbps SFP ports 1*Console port
Port Standard	IEEE802.3 (Ethernet) IEEE802.3u (Fast Ethernet) IEEE 802.3ab (Gigabit Ethernet) IEEE 802.3z (Gigabit Ethernet Fiber Standard) IEEE802.3x (Flow Control) IEEE 802.1D Spanning Tree Protocol IEEE 802.1w Rapid Spanning Tree Protocol
Switching Bandwidth	20Gbps
Packet Forwarding Rate	14.88Mpps
Packet Buffer	4.1Mbit
MAC Address Table	8K
Jumbo Frame	10Kbytes
VLAN	VLAN range 1-4094, maximum active VLAN is 4K
Transmission Method	Store and Forward
PoE Standard	IEEE802.3af (15.4W) IEEE802.3at (30W)
PoE Port Output Voltage	DC 48-55V
PoE Ports	Ports 1-8 PoE power output <30W
PoE Power Budget	According to the adapter
Power Supply	DC12~55V DC48~55V (PoE) Power wiring: 4 PIN industrial terminals (redundant V1+V1-, V2+V2-)

Hardware Features

Description	Specification
Mainboard Power Consumption	14.12W
Structure Information	Product Dimensions: 138*108*51mm Packaging Dimensions: 245*190*70mm Product Net Weight: 0.88KG Product Gross Weight: 1.07KG (excluding power supply)
Packing Information	Carton Dimensions: 520*380*400mm Packing Quantity: 20PCS Packing Weight: 22.4KG
Package Contents	Switch 1pcs, Serial cable 1pcs, Manual 1pcs, Certificate of Inspection 1pcs
Fan Quantity	0
Certification	CE, FCC, RoHS
Installation	Desktop, Wall mounting installation, Rail installation
Surge Protection	Port Surge: Common mode 6KV, Differential mode 2KV Electrostatic ESD: Air 8KV, Contact 6KV (Class B)
Operating Temperature	-40~75°C
Storage Temperature	-40~85°C
Operation Humidity	10%~90%, non condensing
Storage Humidity	5%~95%, non condensing
PWR Green LED	On: Powered on Off: Powered off
SYS Green LED	Flashing: System startup in progress On: The system is running normally
Ports 1-8 Green LED	Slow Flashing: 10/100/1000Mbps Link normal Off: Link blocked Fast Flashing: Data transmitting
Ports 1-8 Yellow LED	On: PoE powered on Off: PoE powered off
Ports G9-G10 Green LED	On: 10/100/1000Mbps Link normal Off: Link blocked Flashing: Data transmitting
LED Mode Button&Reset	Dual color LED selection: default green (link data), switch yellow LED(PoE) Long press for 6 seconds to restore factory settings

Software Features

Description	Specification
L2+ Function	
IPv4	IPv4 VLAN Interface IPv4 Static Routes ARP
IPv6	IPv6 VLAN Interface IPv6 Static Routes IPv6 ND
L2 Function	
Port	Port Switch configuration Port Description configuration Port Speed configuration Port Duplex configuration Port Flow Control configuration Jumbo Frame EEE Fiber Module(DDM)
Link Aggregation	Support load balance policy; Base on MAC and IP-MAC Static and Dynamic Group Up to 8 groups Support LACP
Storm Control	Boardcast suppression Unknown Multicast Unknown Unicast
Port Mirroring	One to one monitor Many to one monitor Ingress/Egress/Both Up to 4 session groups
Port Security	MAC Address Constraints Port Security MAC Address Protect/Restrict/Shutdown
Port Isolation	Support
Port Rate-limit	Support
Loopback Detection	Support

Software Features

Description	Specification
VLAN	Access/Trunk/Hybrid VLAN Tunnel (Q-in-Q Tunnel) VLAN range 1-4094, maximum active VLAN is 4K Voice VLAN MAC VLAN Surveillance VLAN Protocol VLAN GVRP
MAC Address	Dynamic MAC address Static MAC address Filtering MAC Address
Spanning Tree Protocol	STP/RSTP/MSTP BPDU Filter BPDU Guard Edge Port
LLDP	LLDP LLDP MED
Multicast	IGMP Snooping IGMP V1/V2/V3 Router Port Static IGMP group address IGMP groups filtering Querier MLD Snooping MVR
QoS	Traffic classification based, Strict priority and WRR Port Priority 802.1P Priority IP TOS Priority IP DSCP Priority Support up to 8 queues per port Priority Remarking

Software Features

Description	Specification
ERPS	Only SFP port
PoE	
	PoE Temperature
	PoE Type/Level/Power/Voltage/Current query
PoE Configuration	PoE Switch Configuration
	PoE Watchdog Configuration
	PoE power AF/AT adaptation
PoE Schedule	Support
PoE Port Timer Reboot	Support
Services	
	DHCP Server
	IP Pool
DHCP	Static Binding
	Option 43
	DHCP Relay
	HTTP
	HTTPS
	Telnet
	SSHv2
Access Protocol	Manager ACL
	Session Timeout
	Password Retry Count
	Silent Time
Security	
	RADIUS
	TACACS+
AAA	802.1X
	Base on port/MAC/local/WEB
	Global/VLAN
DHCP Snooping	Option 82
	Circuit ID

Software Features

Description	Specification
IP Source Guard	Support
Dynamic ARP Inspection	Support
DoS	Support
ACL	MAC ACL
	IPv4 ACL
	IPv6 ACL
Diagnostics	
Syslog	Logging Message
	Remote Server
Ping	Support
Traceroute	Support
Copper Test	Support
UDLD	Support
Port Statistics	Support
Equipment Management	
Manager Access	Console
	HTTP/HTTPS
	Telnet
	SSH
	SNMP
Manager IP	Static Address
	DHCP Client
	Support IPv4 and IPv6 address
	Manager VLAN
Time Synchronization	DNS
	SNTP
	Manual Time
SNMP	V1/V2C/V3
	Community
	V3 User
	Group
	Trap Host

Software Features

Description	Specification
SNMP MIB	RFC 1213 MIB-II
	RFC 1493 Bridge MIB
	RFC 1643 Ethernet MIB
	RFC 2819 RMON MIB (Groups 1, 2, 3 and 9)
	RFC 2863 Interface MIB
	LLDP Private MIB
RMON	Statistics
	History Configuration
	Event Configuration
	Alarm Configuration
User Management	Support
Firmware Management	Firmware upgrade
Configuration Management	Upload and download
Save	Support
Restart	Support
Factory Defaults	Support
Standard Compliance	
IEEE 802.3x flow control and back pressure	
IEEE 802.3ad port trunk with LACP	
IEEE 802.1D Spanning Tree Protocol	
IEEE 802.1w Rapid Spanning Tree Protocol	
IEEE 802.1s Multiple Spanning Tree Protocol	
IEEE 802.1p Class of Service	
IEEE 802.1Q VLAN tagging	
IEEE 802.1x Port Authentication Network Control	
IEEE 802.1ab LLDP	
IEEE 802.3af Power over Ethernet	
IEEE 802.3at Power over Ethernet Plus	
RFC 768 UDP	
RFC 793 TFTP	
RFC 791 IP	

Software Features

Description	Specification
RFC 792 ICMP	
RFC 2068 HTTP	
RFC 1112 IGMP v1	
RFC 2236 IGMP v2	
RFC 3376 IGMP v3	
RFC 2710 MLD v1	
RFC 3810 MLD v2	

Product Structure Diagram

